

# Guiding Principles, Proposed Milestones

Dr. Carrie Schuman  
CEPD Workshop  
March 2022







Image Credit: Brian Tietz



Image Credit: Southwest Florida Travel



Image Credit: Diana Robinson Photography

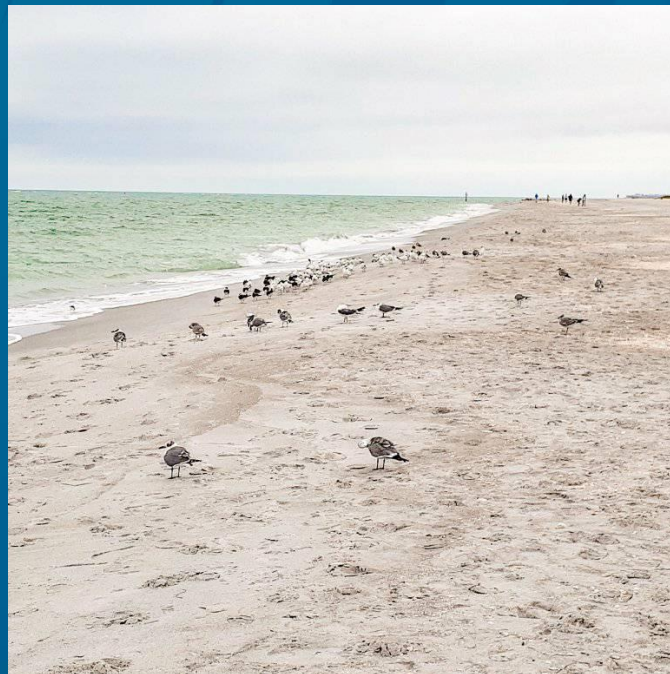


Image Credit: CEPD



Image Credit: Captiva Kayak Company and Wild Adventures



# Outline

- Motivation for Guiding Principle document
- Review of guiding principles
- Proposed steps and milestones (Process)
- SCCF contributions, recommendations

# Motivation for Guiding Principles document

- Derive from the values we want to see from those working on coastal adaptation on our islands
- Assists decision making, strategic planning for a balanced adaptation process
- Allows us to discuss what a planning process looks like
- Creates continuity in vision and approach into the future
- Sets stage for a written plan

# Guiding Principles

- Sections (not hierarchical):
  - General
  - Environmental
  - Infrastructure
  - Economic
- Drawn from local sources/language, similar efforts

## Coastal Resilience Partnership of Southeast Palm Beach County (CRP)

### Guiding Principles

The CRP has established guiding principles for the partnership's work. These are common tenets that should frame the region's future growth and development. CRP guiding principles frame the analysis and recommendations geared to diverse aspects of community vulnerability, including socio-economic, environmental, real estate, and infrastructure considerations.

#### Partnership & Collaboration

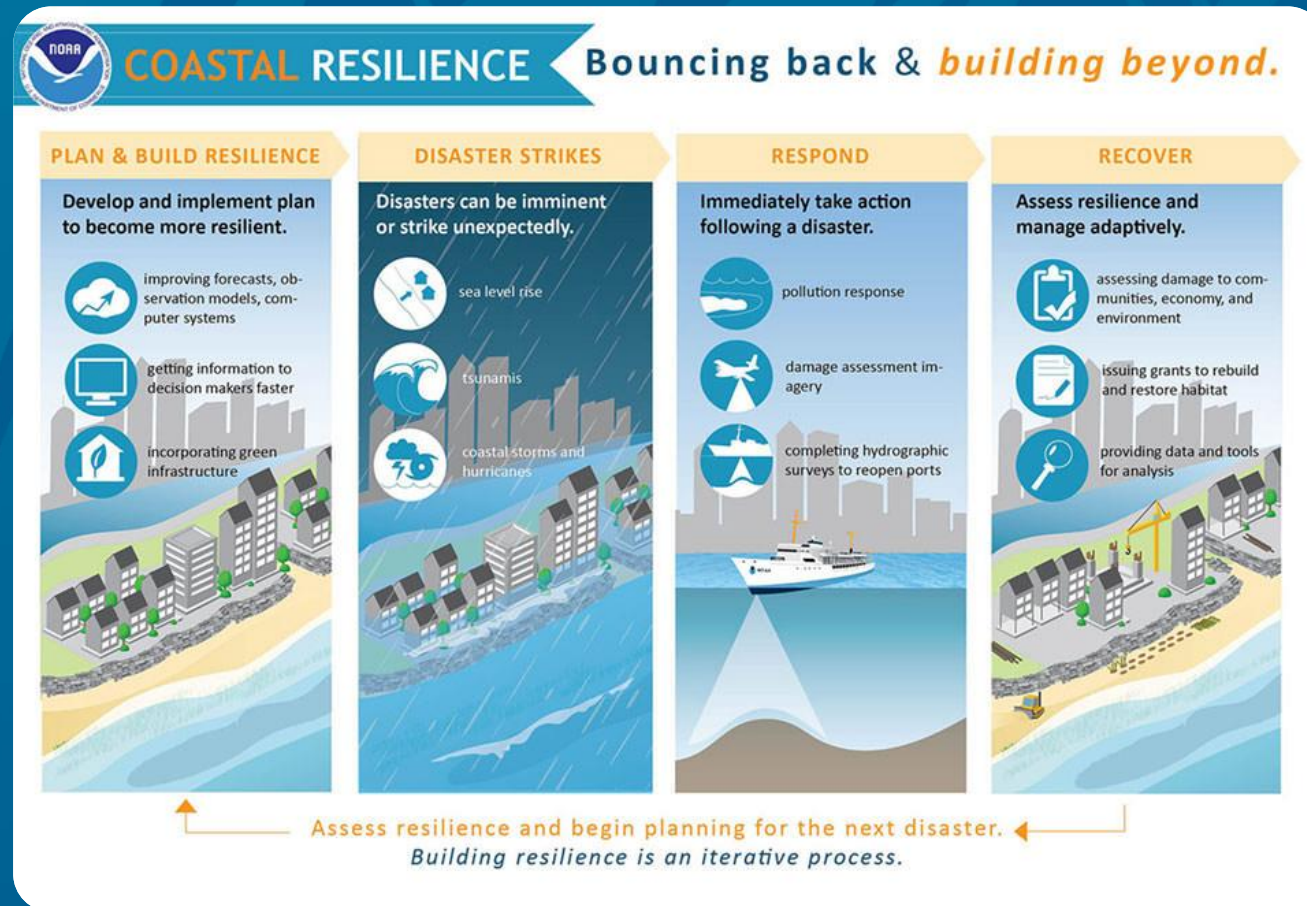
- Climate change and its impacts do not stop at municipal borders, and the adaptation of one community can be strengthened or weakened by actions in another. The CRP will coordinate climate adaptation efforts across neighboring jurisdictions, consider public investments/initiatives, and examine opportunities for public-private partnerships.

#### Infrastructure & Built Environment

- Strategies to protect the built environment will incorporate the best available climate science and projections from the Southeast Florida Regional Climate Change Compact. Climate projections and adaptation strategies will be determined on a time horizon relevant to the lifespan and criticality of the asset(s) in question. The CRP recognizes that adaptation should balance engineering solutions, including nature-based strategies, with long-term planning strategies including managed retreat. The CRP will identify and use Adaptation Action Areas to prioritize public investments and limit new development.

# Guiding Principles - General

## 1) Future climate, best available science & technical know-how, act adaptively





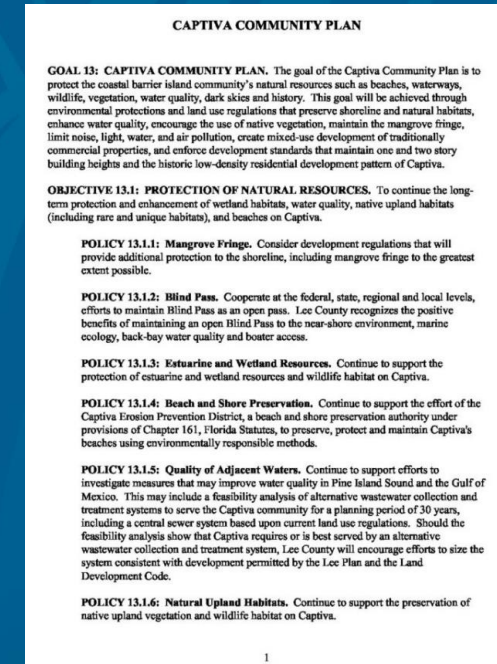
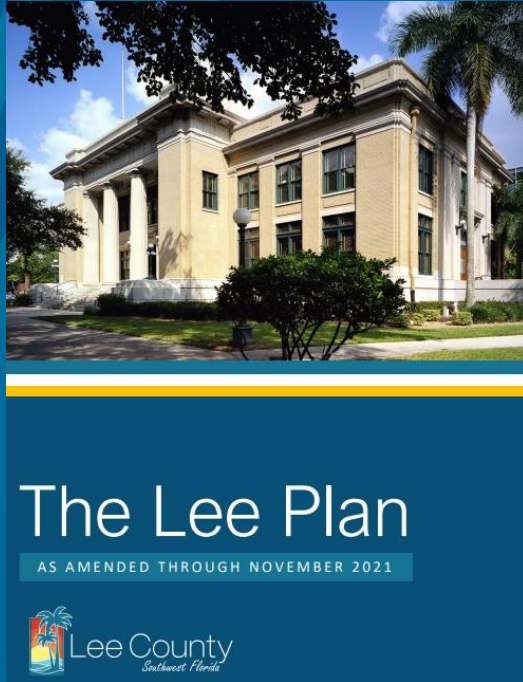
# Guiding Principles - General

2) Impacts  $\neq$  borders. Sanibel and Captiva should work together, ↓ impacts, ↑ benefits



# Guiding Principles - General

3) plans, policies, solutions → consistency



4) Public participation important → buy-in, reduce community dissent, legal action, other barriers



# Guiding Principles - Environmental

- Solutions that consider:



- Solutions that:
  - “preserve the shoreline and natural habitats, enhance water quality, incorporate native vegetation, maintain the mangrove fringe, and limit noise, light, water and air pollution”

Captiva Community Plan  
Vision Statement

# Guiding Principles - Infrastructure

- Preferential use of:

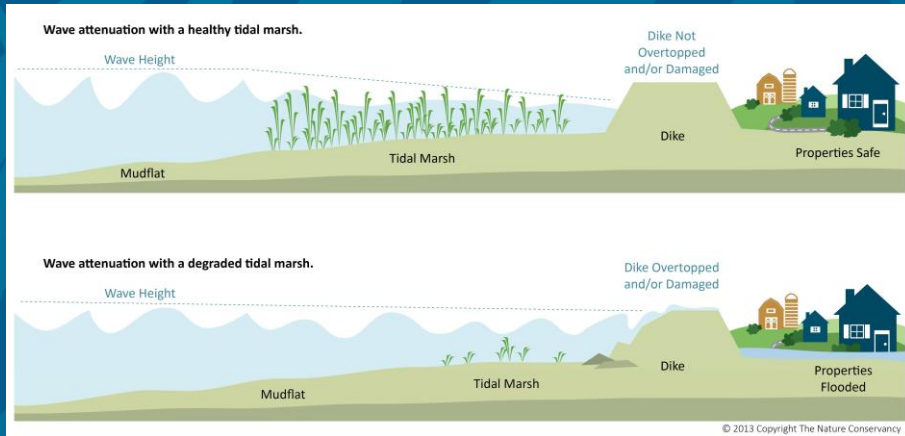


Image Credit: NOAA

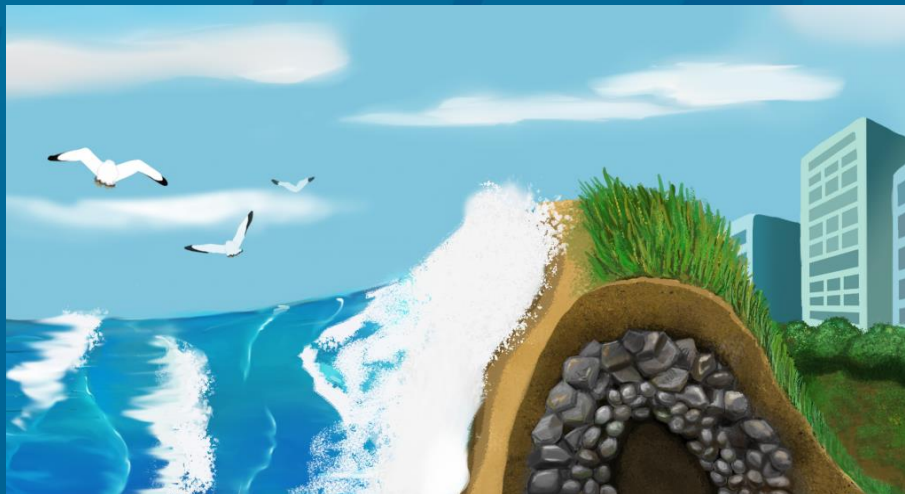


Image Credit: Yuan-Chi Lee, Research Communications



Goffinsville Boat Ramp (Nassau County)

Image Credit: Florida Living Shorelines



# Guiding Principles - Infrastructure

- To avoid:

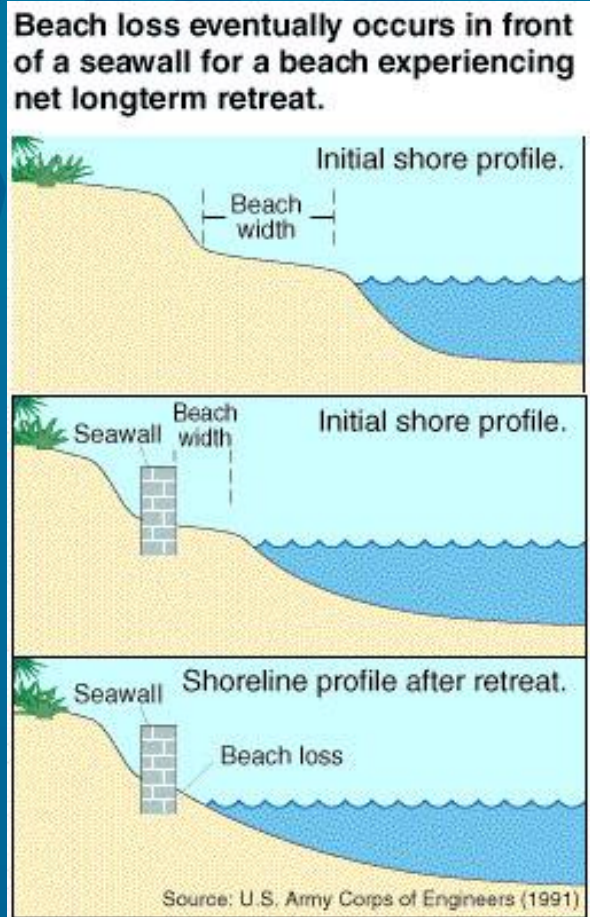
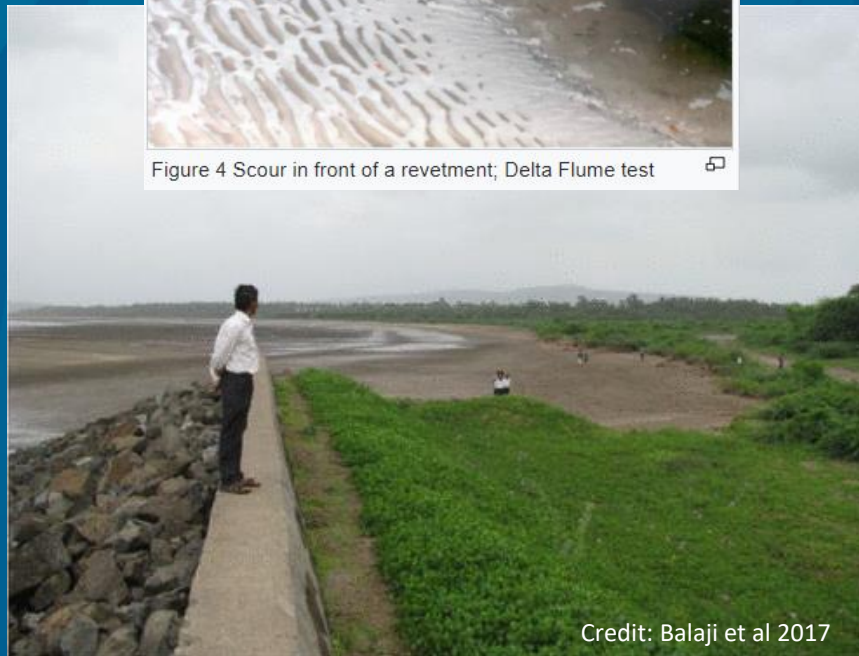


Figure 4 Scour in front of a revetment; Delta Flume test



# Guiding Principles - Infrastructure

- Adaptation Strategies that:
  - protect human life
  - protect public, private property, cultural resources
  - Prioritize w/ regards to economic, social vulnerability, equitability



# Guiding Principles - Economic

- Protecting infrastructure = protecting tax base; maintain economic driver of beach recreation



Credit: SanCap Island Vacation Rentals



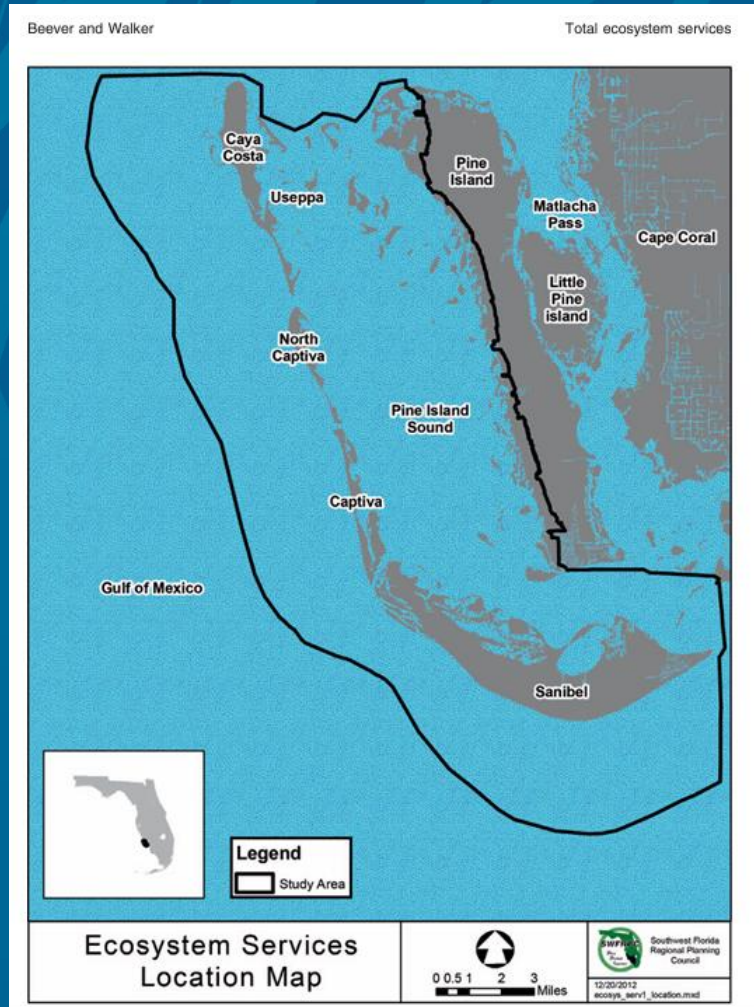
Credit: SanCap Guide



Credit: Beach Bliss Living

# Guiding Principles - Economic

- Assess cost/benefit, include nature co-benefits, maintain funding eligibility



Credit: Beaver and Walker 2016

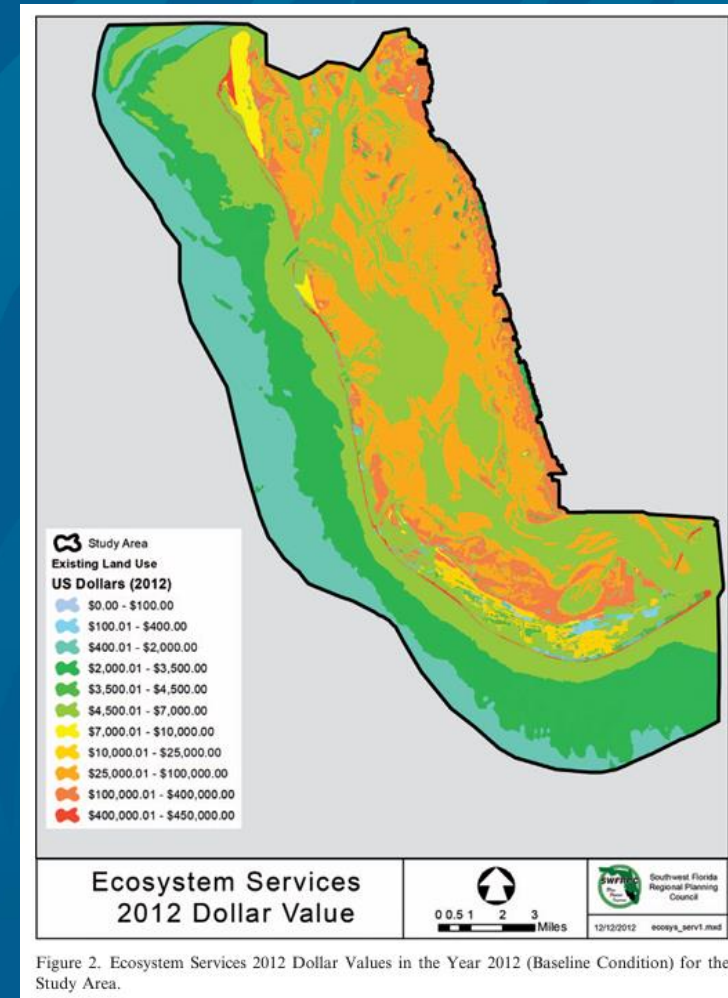


Figure 2. Ecosystem Services 2012 Dollar Values in the Year 2012 (Baseline Condition) for the Study Area.

Credit: Beaver and Walker 2016



# Proposed Milestones/Steps

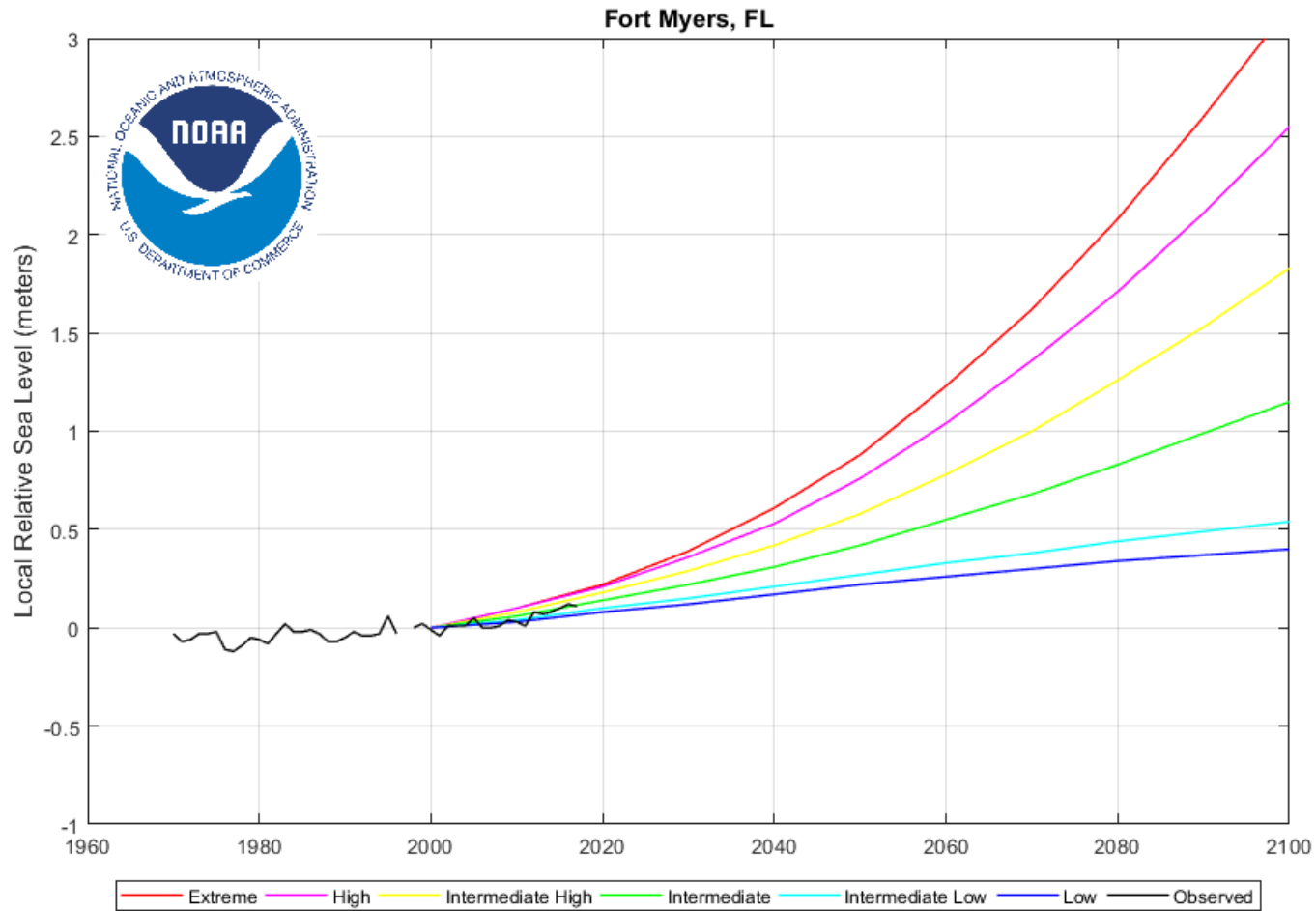
- Define planning vision, principles, motivations
- Draft framework, outline for plan
- Adopt planning horizon/SLR projections consistent with FDEP resilience funds

# FDEP Compliance

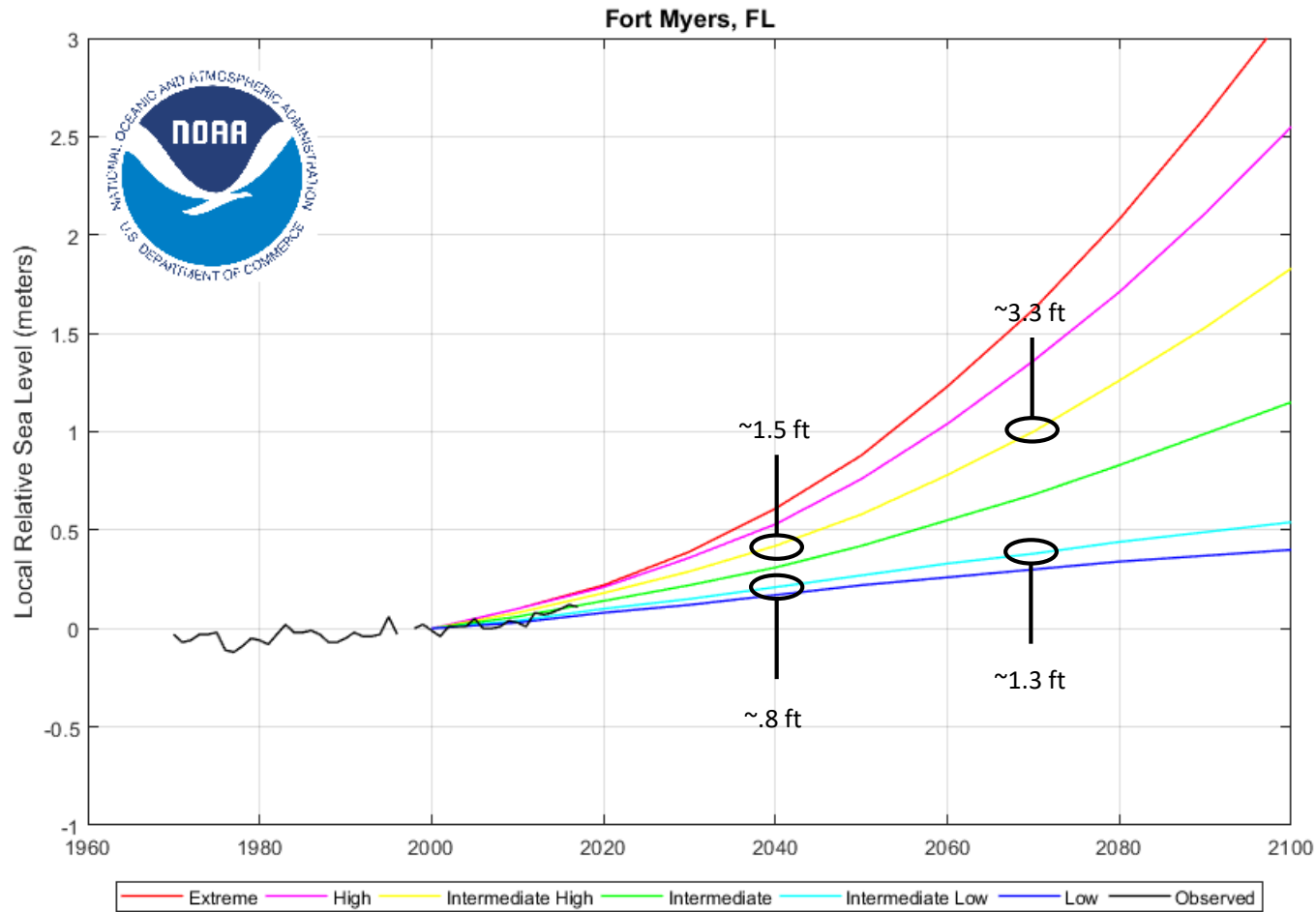
- SLR (high tide flooding), storm flooding, rainfall-induced flooding (as practicable)
- SLR Projections – 2017 NOAA curves
  - 2022 report just came out
- Planning years 2040, 2070



# FDEP Funding Requirements

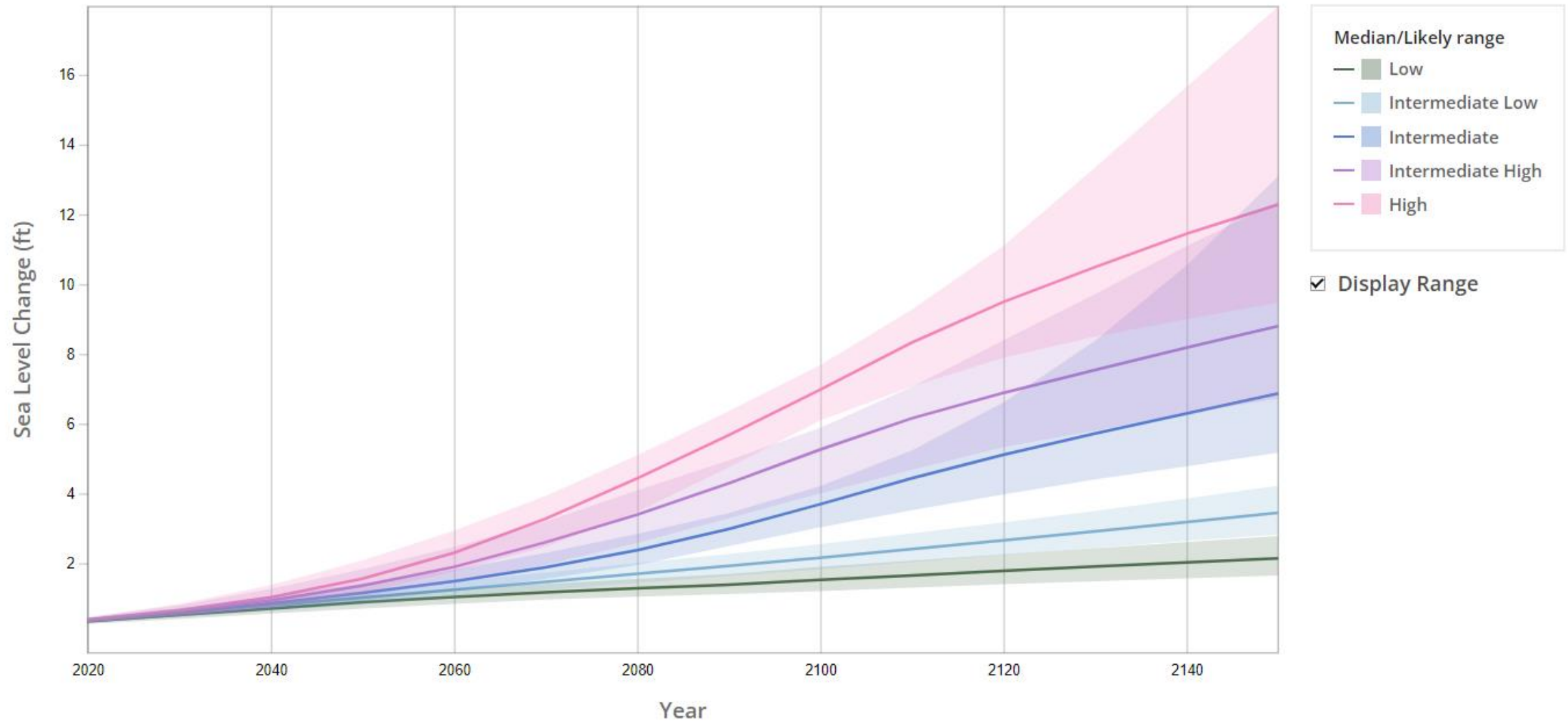


# FDEP Funding Requirements



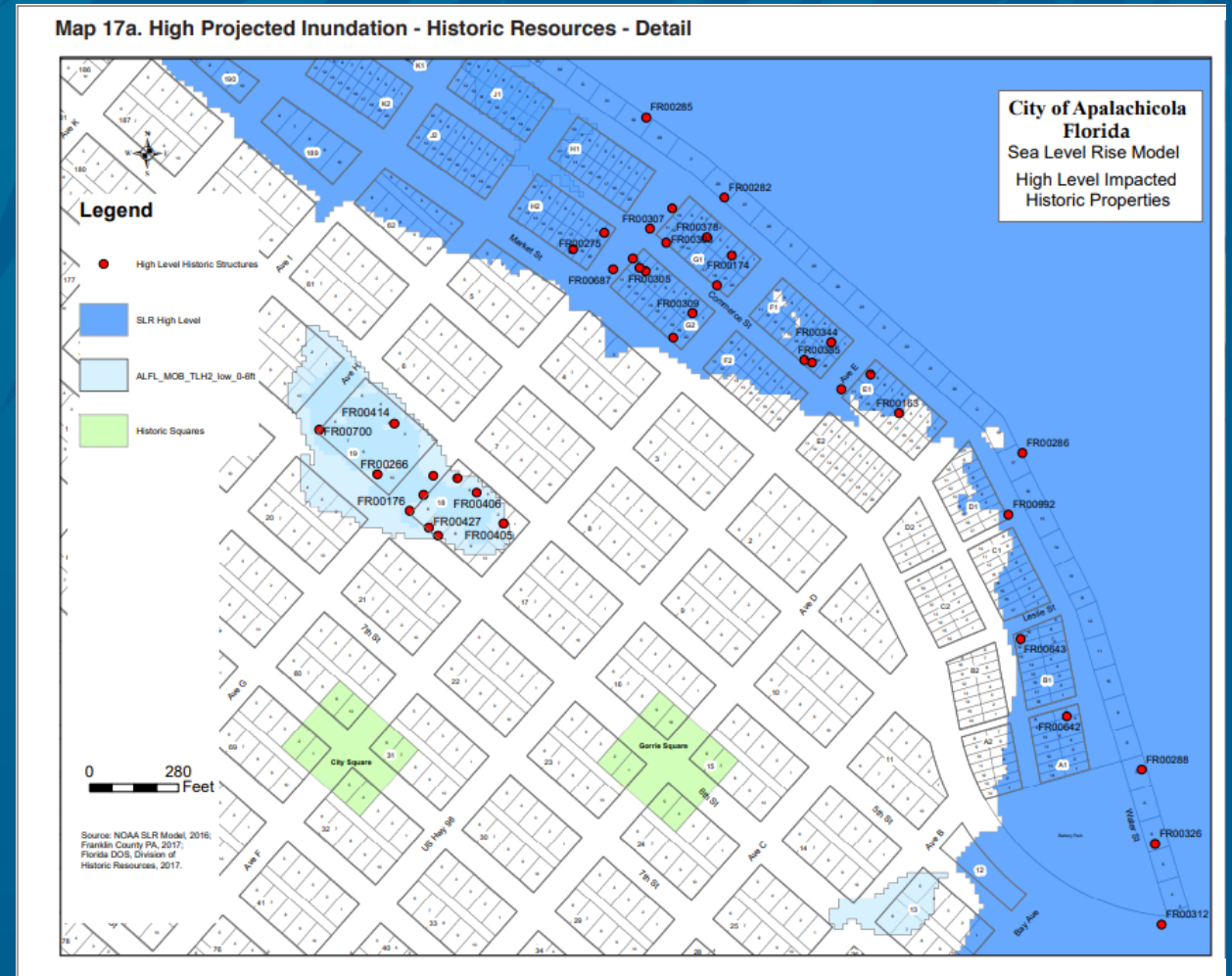


# 2022 curves



# Proposed Milestones/Steps

- Characterize coastal risks → operationalize into useable form
  - Cheryl's work
  - County Proposal
  - ACUNE
- Evaluate critical assets against coastal risks, generate a ranked list, explore solutions/strategies





# Proposed Milestones/Steps

- Assess cost/benefit, recommendations
- Adopt/integrate plans
- Outline implementation, funding, assessment

## Follow-Up, SCCF will assist with:

- Assist CEPD and contractors to create a written plan
- Provide forum, support for public engagement
- Track legislation and send out a regular communication with updates on planning, grants, bills, etc.
- Coordinate planning efforts with Sanibel
- Maintain consistency and coordination to the extent possible between islands